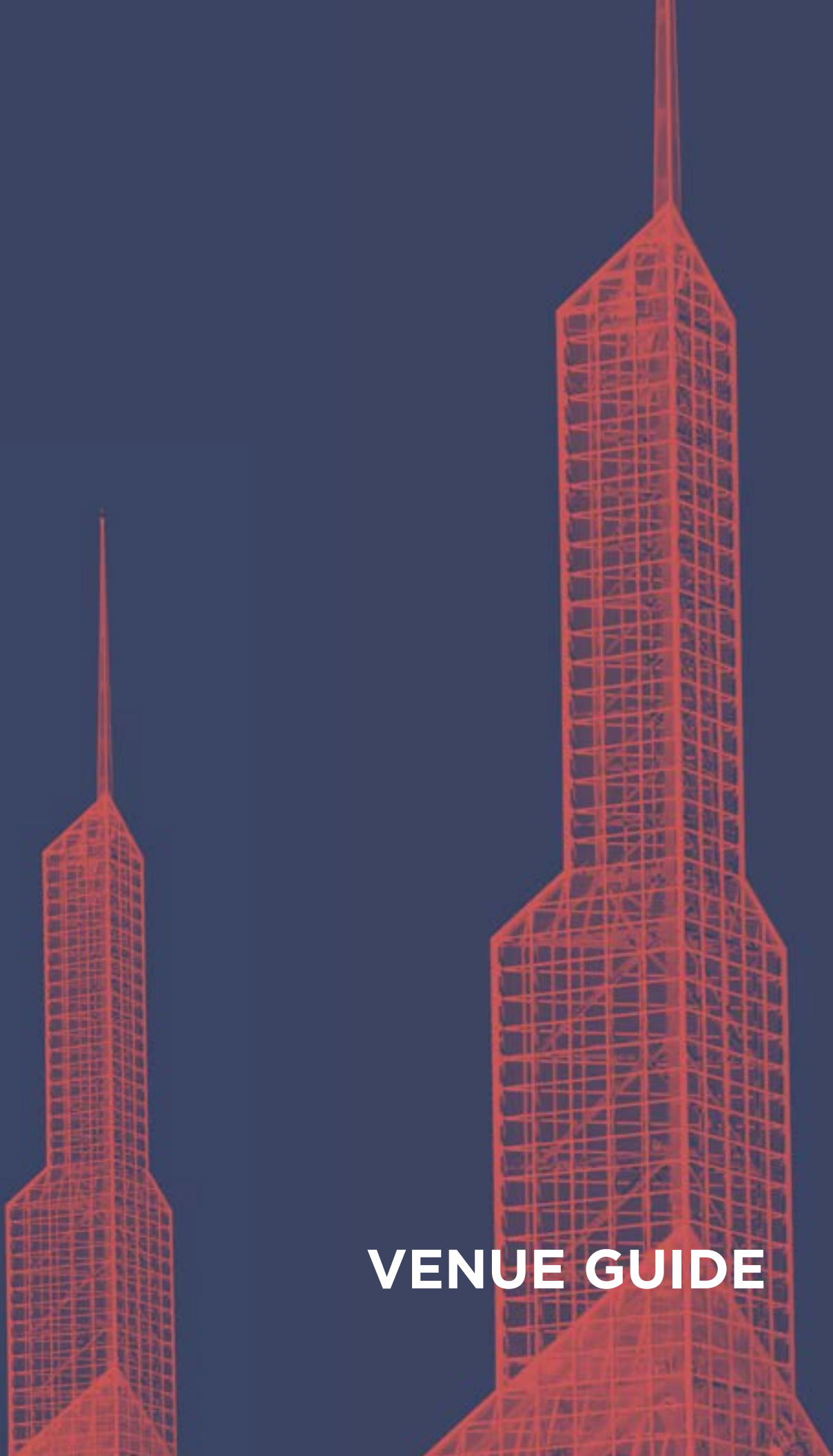


OREGON

Oregon
Convention
Center

WELCOME.



VENUE GUIDE

Level 1

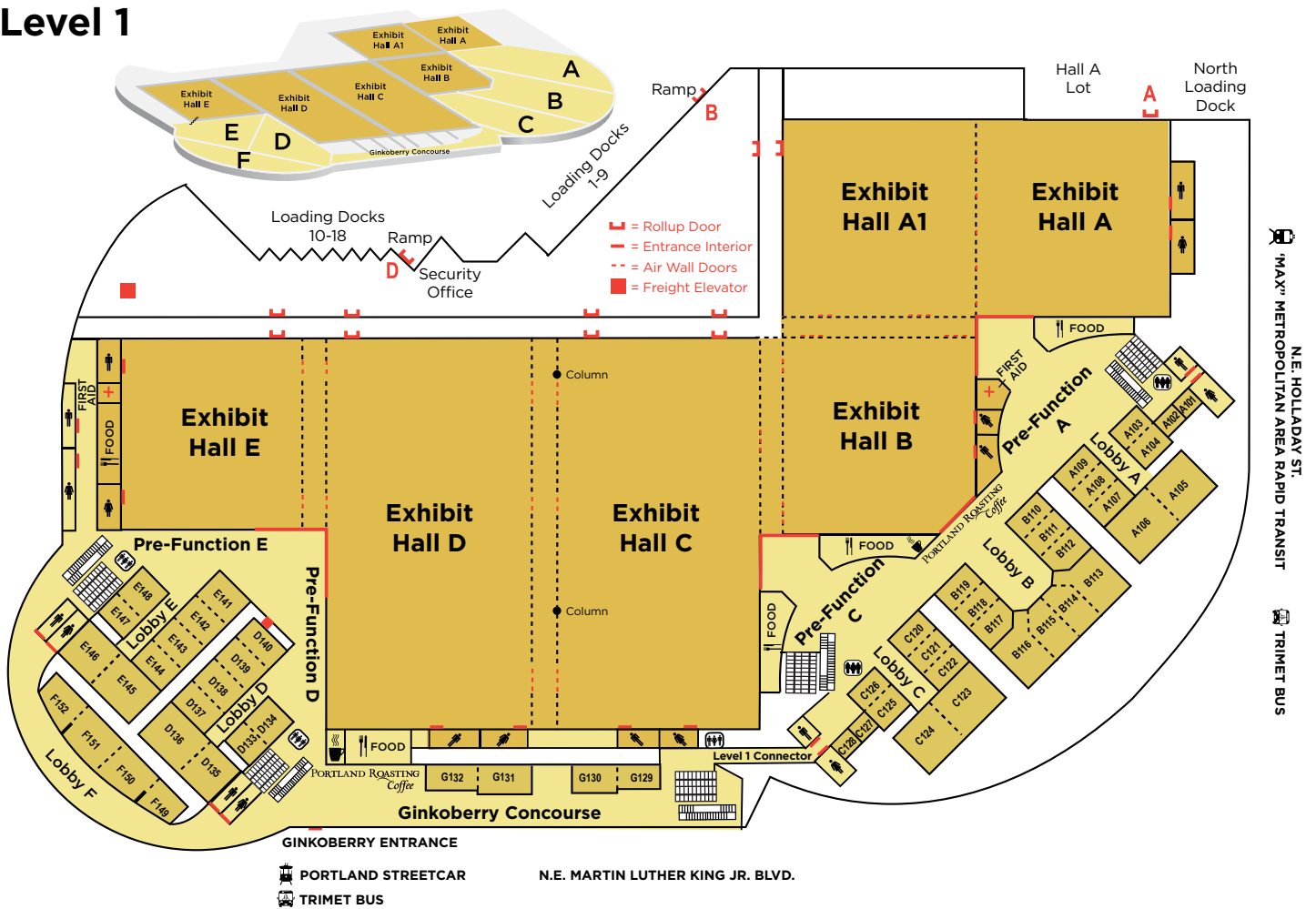
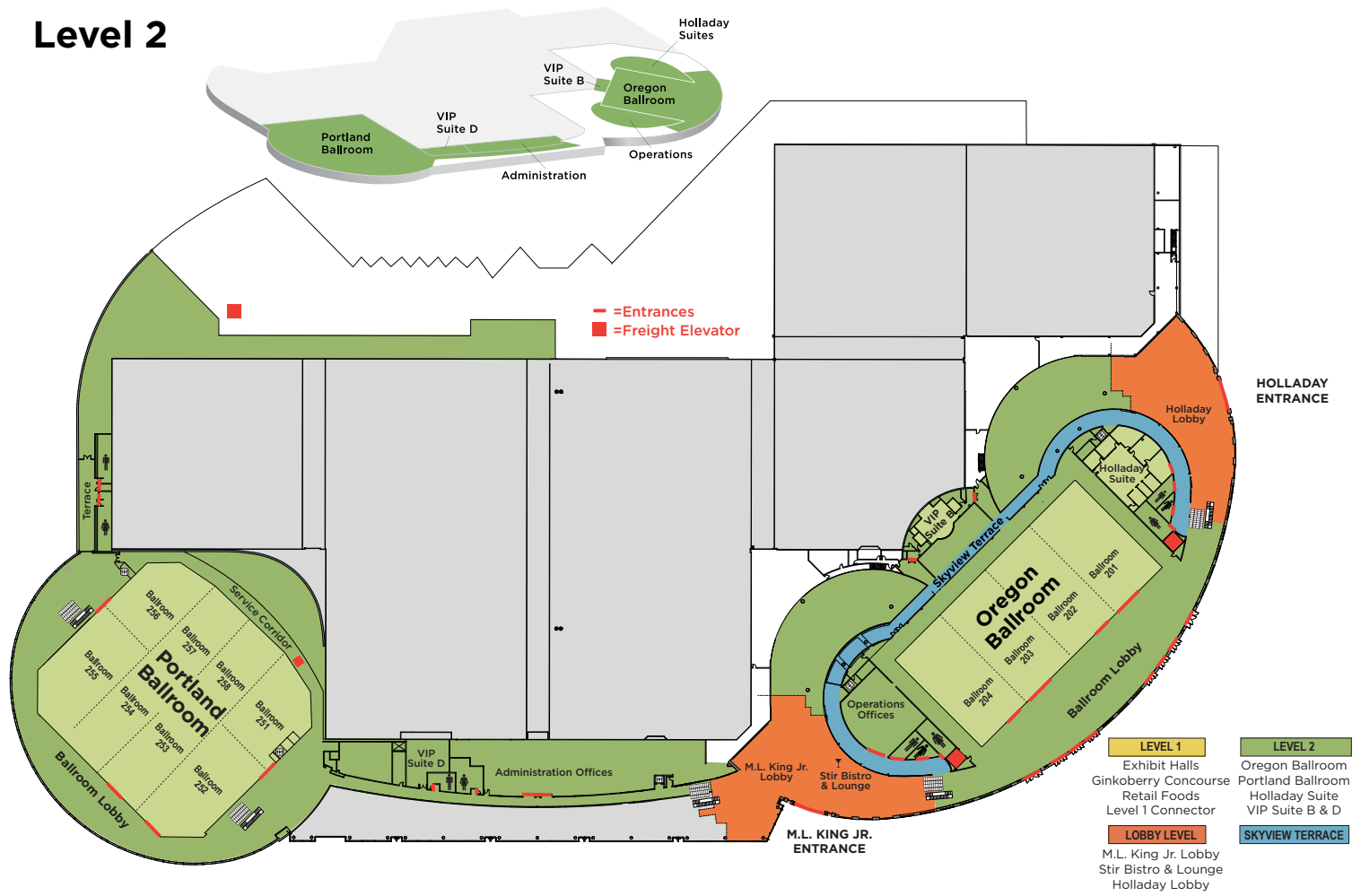


EXHIBIT HALLS	SQUARE FEET	APPROXIMATE DIMENSIONS	CEILING HEIGHT	THEATER	CLASSROOM	ROUNDS	10'X10' EXHIBITS
A	30,000	170' x 170'	30'	3,040	1,740	1,430	154
A-A1	60,000	170' x 340'	30'	6,460	3,828	3,250	308
A-A1-B	90,000	340' X 265'	30'			4,880	469
A-A1-B-C	155,000	430' X 360'	30'			8,370	819
A-A1-B-C-D	222,000	700' X 315'	30'			11,870	1,213
A-A1-B-C-D-E	255,000	800' X 320'	30'			13,550	1,393
A1-B	60,000	170' X 340'	30'		3,928	3,450	317
A1-B-C	124,000	280' X 445'	30'			6,960	661
A1-B-C-D	195,000	575' X 340'	30'			10,440	1,055
A1-B-C-D-E	225,000	700' X 320'	30'			12,120	1,234
B	30,000	170' X 170'	30'	2,592	1,469	1,410	135
B-C	93,000	350' X 265'	30'			4,900	493
B-C-D	162,000	530' X 305'	30'			8,650	887
B-C-D-E	195,000	1,020' X 190'	30'			11,400	1,067
C	61,000	180' X 340'	30'	6,288	3,600	3,250	328
C-D	130,000	380' X 340'	30'	13,476	7,680	7,000	722
C-D-E	162,000	305' X 530'	30'			8,820	897
D	61,000	180' X 340'	30'	6,290	3,600	3,250	327
D-E	93,000	350' X 265'	30'			5,070	505
E	30,000	170' X 170'	30'	2,666	1,680	1,440	147
LOBBIES	SQUARE FEET		CEILING HEIGHT				10'X10' EXHIBITS
Pre-Function A	11,400		65'				12
Pre-Function C	11,400		65'				12
Pre-Function D	4,750		65'				12
Pre-Function E	4,750		65'				12
Ginkoberry Concourse	13,000		65'				12

MEETING ROOMS	SQUARE FEET	APPROXIMATE DIMENSIONS	CEILING HEIGHT	THEATER	CLASSROOM	ROUNDS	RECEPTION
A SERIES	8,256						
A101	263	21' x 13'	9'2"	22	15	10	35
A102	165	13' x 13'	9'2"	15	8	10	20
A103	621	31' x 20'	18'	56	30	30	90
A104	756	31' x 25'	18'	74	38	40	110
A105	1,874	44' x 43'	18'	196	103	90	265
A106	2,231	52' x 43'	18'	236	119	120	320
A107	826	37' x 22'6"	18'	89	43	40	115
A108	737	37' x 20'	18'	71	39	40	105
A109	783	37' x 21'	18'	79	39	40	110
A103-104	1,377	31' x 45'	18'	115	68	70	195
A105-106	4,105	96' x 43'	18'	446	254	210	585
A107-108	1,563	37' x 42'6"	18'	140	71	90	220
A107-109	2,346	37' x 63'6"	18'	236	119	150	335
A108-109	1,520	37' x 41'	18'	140	71	90	215
B SERIES	10,584						
B110	783	37' x 21'	18'	89	39	40	110
B111	737	37' x 20'	18'	81	39	40	105
B112	937	37' x 26'	18'	104	50	50	135
B113	1,665	37' x 46'	18'	183	101	90	235
B114	1,170	27' x 46'	18'	144	71	60	165
B115	1,170	27' x 46'	18'	144	71	60	165
B116	1,665	37' x 46'	18'	183	101	90	235
B117	937	37' x 26'	18'	104	50	50	130
B118	737	37' x 20'	18'	81	39	40	105
B119	783	37' x 21'	18'	89	39	40	110
B110-111	1,520	37' x 41'	18'	140	77	90	215
B110-112	2,457	37' x 67'	18'	268	142	150	350
B111-112	1,674	37' x 46'	18'	172	90	90	235
B113-114	2,835	64' x 46'	18'	326	159	150	405
B113-115	4,005	91' x 46'	18'	470	249	210	570
B113-116	5,670	128' x 46'	18'	731	367	270	810
B114-115	2,340	54' x 46'	18'	268	138	120	335
B114-116	4,005	91' x 46'	18'	470	249	210	570
B115-116	2,835	64' x 46'	18'	326	159	150	405
B117-118	1,674	37' x 46'	18'	172	90	90	235
B117-119	2,457	37' x 67'	18'	268	142	150	350
B118-119	1,520	37' x 41'	18'	140	77	90	215
C SERIES	8,256						
C120	783	37' x 21'	18'	79	39	40	110
C121	737	37' x 20'	18'	71	39	40	105
C122	826	37' x 22'6"	18'	89	43	40	115
C123	2,231	52' x 43'	18'	236	119	120	320
C124	1,874	44' x 43'	18'	196	103	90	265
C125	756	31' x 25'	18'	74	38	40	110
C126	621	31' x 20'	18'	56	30	30	90
C127	165	13' x 13'	18'	15	8	10	20
C128	263	21' x 13'	18'	22	15	10	35
C120-121	1,520	37' x 41'	18'	140	71	90	215
C120-122	2,346	37' x 63'6"	18'	236	119	150	335
C121-122	1,563	37' x 42'6"	18'	140	71	90	220
C123-124	4,105	96' x 43'	18'	446	254	210	585
C125-126	1,377	31' x 45'	18'	115	68	70	195

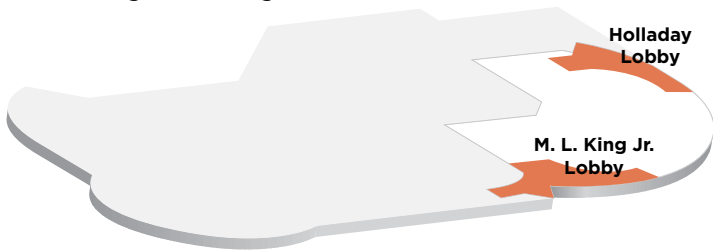
MEETING ROOMS	SQUARE FEET	APPROXIMATE DIMENSIONS	CEILING HEIGHT	THEATER	CLASSROOM	ROUNDS	RECEPTION
D SERIES	8,357						
D133	811	25' x 32'	18'	73	44	40	100
D134	647	25' x 26'	18'	61	28	40	80
D135	1,386	38' x 36'	18'	132	77	90	170
D136	1,818	50' x 36'	18'	188	103	120	225
D137	983	36' x 27'	18'	101	54	60	120
D138	940	35' x 27'	18'	101	54	60	110
D139	958	35' x 27'	18'	101	54	60	110
D140	814	35' x 23'	18'	87	43	40	100
D133-134	1,458	25' x 58'	18'	150	79	80	180
D135-136	3,204	88' x 36'	18'	364	190	210	400
D137-138	1,923	36' x 54'	18'	191	106	120	240
D137-139	2,881	36' x 80'	18'	311	166	180	350
D137-140	3,695	36' x 103'	18'	416	214	240	450
D138-139	1,898	36' x 53'	18'	191	106	120	230
D138-140	2,712	36' x 75'	18'	281	154	150	330
D139-140	1,772	36' x 49'	18'	176	94	90	220
E SERIES	8,755						
E141	1,212	36' x 31'	18'	124	67	60	150
E142	958	35' x 27'	18'	101	54	60	110
E143	940	35' x 27'	18'	101	54	60	110
E144	983	36' x 27'	18'	101	54	60	120
E145	1,818	50' x 36'	18'	188	103	120	225
E146	1,386	38' x 36'	18'	140	77	90	170
E147	647	25' x 26'	18'	61	28	40	80
E148	811	25' x 32'	18'	73	44	40	100
E141-142	2,170	36' x 60'	18'	221	106	120	270
E141-143	3,110	36' x 86'	18'	326	178	180	375
E141-144	4,093	36' x 113'	18'	461	250	270	500
E142-143	1,898	36' x 53'	18'	191	106	120	230
E142-144	2,881	36' x 80'	18'	311	166	180	350
E143-144	1,923	36' x 54'	18'	191	106	120	240
E145-146	3,204	88' x 36'	18'	364	190	210	400
E147-148	1,458	25' x 58'	18'	150	79	80	180
F SERIES	6,066						
F149	1,158	34' x 34'	18'	117	63	60	140
F150	1,875	44' x 42'	18'	196	95	90	230
F151	1,875	44' x 42'	18'	196	95	90	230
F152	1,158	34' x 34'	18'	117	63	60	140
F149-150	3,033	34'-44' x 76'	18'	322	159	150	375
F149-151	4,908	34'-44' x 118'	18'	517	273	240	600
F149-152	6,066	34'-42' x 161'	18'	652	322	330	750
F150-151	3,750	44' x 84'	18'	406	209	210	460
F150-152	4,908	34'-44' x 118'	18'	517	273	240	600
F151-152	3,033	34'-44' x 76'	18'	322	159	150	375
G SERIES	4,047						
G129	785	20' x 39'	18'	70	30	30	75
G130	1,024	26' x 39'	18'	90	40	40	100
G131	1,228	25' x 48'	18'	123	58	60	150
G132	1,010	21' x 47'	18'	100	50	40	125
G129-130	1,809	20' x 78'	18'	160	60	70	175
G131-132	2,238	23' x 96'	18'	236	112	110	250

Level 2



BALLROOMS	SQUARE FEET	APPROXIMATE DIMENSIONS	CEILING HEIGHT	THEATER	CLASSROOM	ROUNDS	RECEPTION	10' X 10' EXHIBITS
PORTLAND BALLROOM								
251 or 256	4,000	88' x 46'	28'	437	254	180	460	13
252	4,700	88' x 54'	28'	412	249	210	550	15
253, 254, 257 or 258	4,200	88' x 48'	28'	394	239	180	490	16
255	4,700	88' x 54'	28'	412	250	210	550	15
251 & 258 or 256-257	8,200	88' x 94'	28'	827	491	420	960	27
253-254	8,400	88' x 96'	28'	820	490	420	980	30
253-258 or 254-257	8,400	176' x 48'	28'	828	495	390	980	32
251-252 or 255-256	8,700	176' x 50'	28'	919	523	420	1,020	29
252-253 or 254-255	8,900	88' x 96'	28'	982	590	490	1,040	29
251 & 257-258 or 256-257-258	12,400	88' x 142'	28'	1,472	821	700	1,450	43
252-253-254 or 253-254-255	13,100	88' x 148'	28'	1,595	887	700	1,540	43
251 & 258-257-256	16,400	88' x 188'	28'	1,806	1,110	900	1,920	60
252-253-254-255	17,800	88' x 198'	28'	2,056	1,233	970	2,090	56
253-254-257-258	16,800	176' x 96'	28'	1,886	1,155	910	1,970	62
251-252-253-258 or 254-255-256-257	17,100	176' x 98'	28'	1,890	1,256	910	2,000	59
251-252-253-254-257-258	25,500	176' x 146'	28'	2,942	1,844	1,430	3,000	89
253-254-255-256-257-258	25,500	176' x 146'	28''	2,942	1,844	1,430	3,000	89
251-252-253-254-255-256-257-258	34,200	176' x 198'	28'	4,220	2,442	1,950	4,000	110
OREGON BALLROOM								
201, 202, 203 or 204	6,300	110' x 58'	25'	696	398	320	700	27
201-202 or 202-203 or 203-204	12,600	110' x 116'	25'	1,458	646	640	1,400	54
201-203 or 202-204	18,900	110' x 174'	25'	2,241	1,292	1,040	2,100	90
201-204	25,200	110' x 232'	25'	3,024	1,710	1,360	2,800	126

Lobby & Skyview Levels



VIP SUITES & TERRACE	SQUARE FEET	CEILING HEIGHT	THEATER	CLASSROOM	ROUNDS	RECEPTION
VIP Suite B	1,670	8'				12
VIP Suite D	1,200	8'				16
Holladay Suite	4,096	8'	20	20	20	20
Skyview Terrace	7,000					140

LOBBIES	SQUARE FEET	RECEPTION
Oregon Ballroom Lobby	14,000	400
Portland Ballroom Lobby	16,336	600
M.L. King Jr. Lobby	11,500	200
Holladay Lobby	9,000	200

Outdoor Plazas

NORTH PLAZA

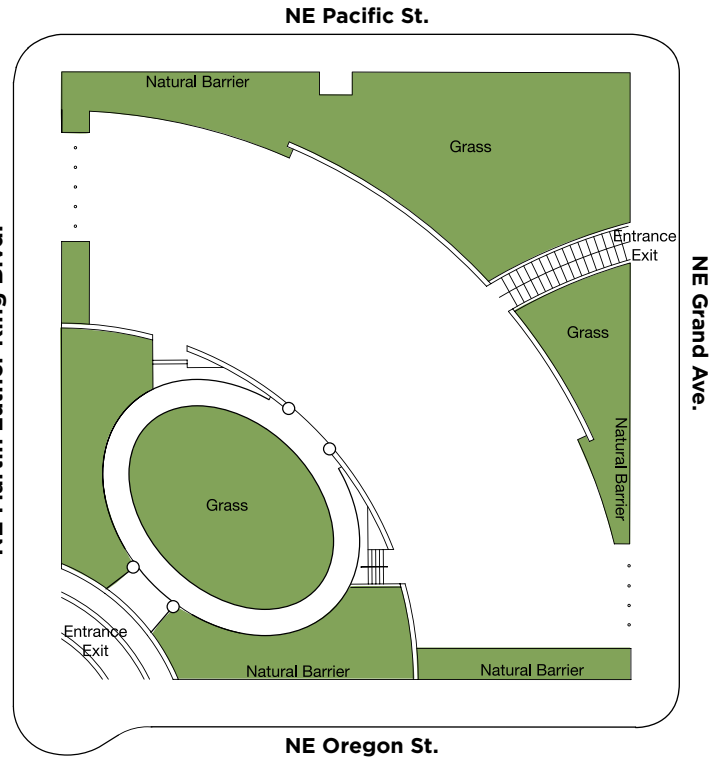
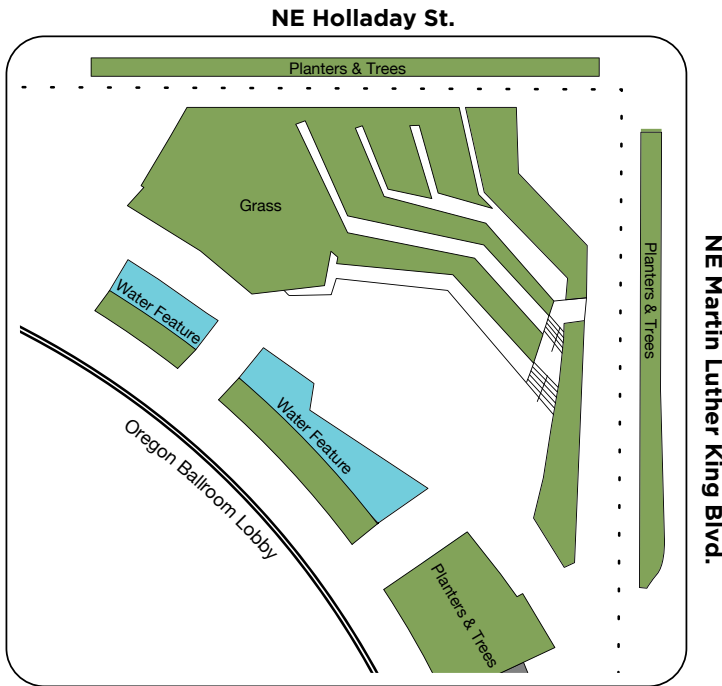
Square Feet: 22,000

Reception: 700

CONVENTION CENTER PLAZA

Square Feet: 30,000

Reception: 1,200



Oregon
Convention
Center

Have a question?

Reach out to one of our experts anytime! Just call us at 1-800-791-2250 or email sales@oregoncc.org. We look forward to hosting your next event!